

# Charger Amplifier

*For Unication G-Series P25 Voice Pagers*



**Rugged. Reliable. Built to LAST.**

Email : [Info@Unication.com](mailto:Info@Unication.com)

Website : [www.Unication.com](http://www.Unication.com)



## **Note: Please read the following sections before using the Charger Amplifier for Digital G-Series Voice Pager.**

### **※ IMPORTANT SAFETY INFORMATION**

To ensure the safe use of this product:

Use your charger amplifier only with the supplied power adaptor.

Use the batteries provided by Unication for your G-Series product.

Keep your charger amplifier away from high temperature, high humidity, dust, chemicals and corrosive materials.

Do not disassemble your charger amplifier or power adaptor.

This device complies with part 15 of the FCC Rules.

Operation is subject to the following two conditions:

- (1) This device may not cause harmful interference, and
- (2) This device must accept any interference received, including interference that may cause undesired operation.



## A OVERVIEW

### A-1 Standard Package:

Standard package contains:

- Charger Amplifier for Digital G Series Pager →



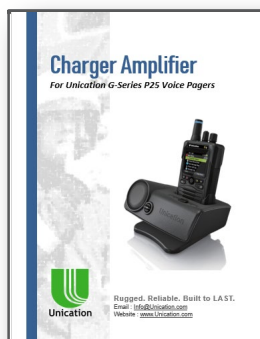
- Adaptor →



- External Antenna →



- Manual →



## A-2 Specification:

Item		Specification
Charging Type	Main Charging Socket	For one Digital G-Series Voice Pager
	BT Charging Socket	For USB Device (BT headset supported)
Power Supply	Adaptor Input / Output	Input: 100~240VAC / 50~60 Hz Output: 12Vdc / 1.5A
	Normal Charge Current	900 mA / 5.0 V
	Full Recharge Time	3 Hours
SPL	Alert Output	≥ 106 dBSPL
	Speech Output	≥ 104 dBSPL
	Audio Distortion	<ul style="list-style-type: none"> <li>• Audio Distortion: Real Time Audio: &lt; 5 % (Electrical) / &lt; 6 % (Acoustic)</li> <li>• Audio Distortion: Stored-Voice Playback: &lt; 8 % (Electrical) / &lt; 10 % (Acoustic)</li> </ul>
External I/O	Audio Out	3.5mm Audio Jack *1
	Ext. Antenna Port	BNC Jack *1
	USB Charging Port	USB A-Type *1
	Controller Port	RS485 (DB-9 Female) *1
	Power Input (DC)	12Vdc / 1.5A
	Horn Speaker Port	4 Pin Port
	6 Pin DIN Port	6 Pin DIN Port
LED Indicators	Power LED	Green
	Charging LED	Red / Orange / Green
	Alarm LED	Orange / Green
	Horn Speaker LED	Orange / Green
Physical	Dimensions	162(L) x 115(W) x 53(H) mm
	Weight	600 g
Handing Temperature	Operation Temperature	0 ~ +40°C
	Storage Temperature	-10 ~ + 60 °C
Certification	CE, FCC, RoHs, UL, CUL	



## B OVERVIEW



### B-1 Front View:



Item	Description
F1	Speaker
F2	Volume Control Knob

## B-2 Top View:

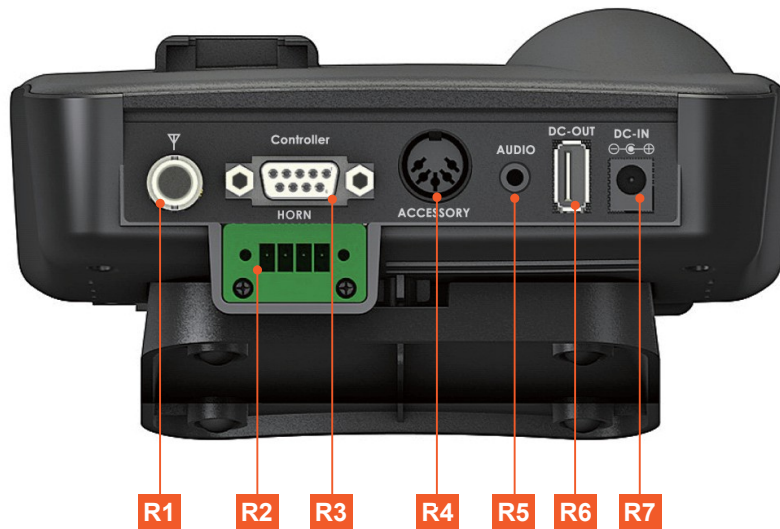


Item	Description
F3	Pager Socket
F4	Alert Light
F5	Reset Button

## B-3 LED Indicators:

No.	Item	Color	LED Action	Description
F6	Power LED	Green	Steady	Charger Amplifier Power Turn ON.
F7	Charging LED	Orange	Steady	Pager is charging.
		Green	Steady	Pager is fully charged.
F8	Alarm LED	Off	Steady	Alarm device is not connected.
		Orange	Steady	Alarm device is connected, no messages received.
		Green	Steady	Alarm device is connected, receiving alarm messages.
F9	Horn Speaker LED	Off		Horn Speaker is not connected.
		Orange	Steady	Horn Speaker is connected, no message received.
		Green	Steady	Horn Speaker is connected, Horn Speaker message received.

## B-4 Rear View:



Item	Description
R1	External Antenna Port (BNC)
R2	Horn Speaker 4 Pin Horn Port
R3	Controller Port (RJ485)
R4	Alarm Device 6 Pin Din Port
R5	Audio Out
R6	USB Charging Port
R7	Power Input (DC)

## **C OVERVIEW**

### **1 Power Source:**

Connect the Charger Amplifier to power outlet (110/60Hz) with the supplied Adaptor.  
Connect the Charger Amplifier to vehicle's lighter socket with optional vehicle charger cable.

### **2 Charging Digital G Series Pager:**

Insert Digital G Series Voice Pager into Charger Amplifier's Pager Socket tightly. The charging process starts with Charging LED indicator shows orange. When the battery is fully charged, the LED turns green.

### **3 Charging USB device:**

Connect the USB device to the Charger Amplifier's USB Charging Port with USB Cable.

### **4 Voice Message Amplification:**

Turn on Digital G Series Voice Pager and put into Charger Amplifier's pager socket.  
When the pager receives voice messages, it will be amplified based on the volume knob setting.





## 5 External Antenna Port:

Please select antenna depending on the frequency use. Unication provides the antenna options below:

UHF1 750~860 MHz

UHF2 406~512 MHz

VHF 136~174MHz

Low Band 30~88 MHz



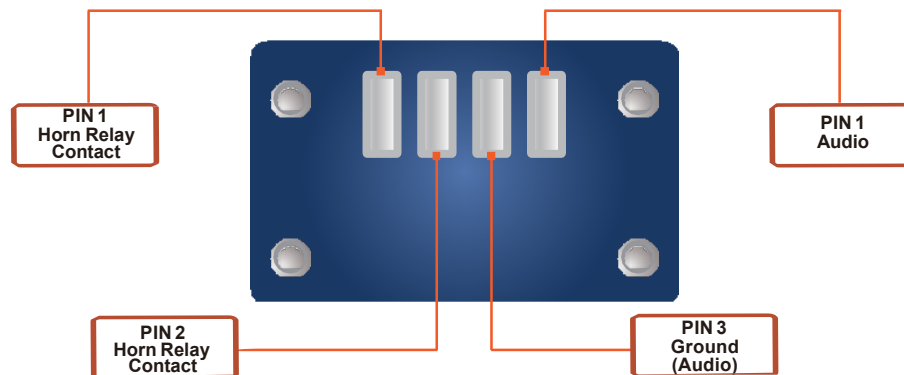
## 6 Horn Speaker 4 Pin Horn Port:

PIN 1 Horn Relay Contact

PIN 2 Horn Relay Contact

PIN 3 Ground (Audio)

PIN 4 Audio\*



## 7 Controller Port: (RJ485)

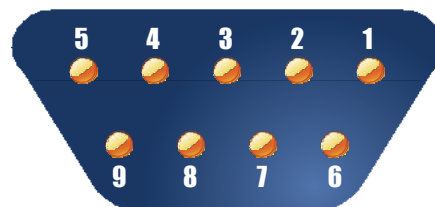
The Controller Port is for external LED or Uni-controller use.

PIN 3: RS485\_A

PIN 2: RS485\_B

PIN 3: RS485\_A

PIN 2: RS485\_B



## 8 3.5mm Audio Jack:

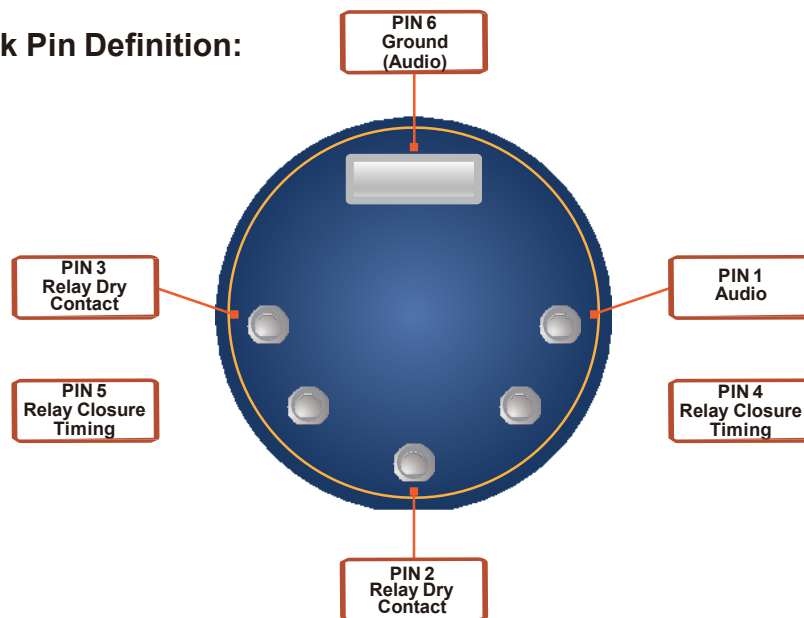
This connections audio output is controlled by the volume knob on the device and mutes the onboard speaker when in use.

## 9 Alarm Device 6 Pin Din Port:

The Charger Amplifier for Digital G-Series Pager provides 2 modes to select via Side Switch

1. M5 Mode (default)
2. Horn Speaker Mode

### DIN Jack Pin Definition:



PIN 1 Audio\*  
PIN 2 Relay Dry Contact  
PIN 3 Relay Dry Contact  
PIN 4 Relay Closure Timing  
PIN 5 Relay Closure Timing  
PIN 6 Ground (Audio)



*\*This Connection provides line level audio not controlled by the volume knob. Using this connection will not mute the onboard speaker.*

## 10 USB Charging Port:

This port is for charging USB device and Bluetooth earpiece. (5V/300mA)

## 11 Power Input:

The Charger Amplifier for Digital G Series Pager use a 12V/1.5A DC ADAPTOR, power input is 100~240VAC with maximum power 18W. Please connect to the power outlet with supplied power adaptor.

## 12 External Equipment Control

The Charger Amplifier provides a variety of I/O for external device control.

### 12-1. Horn Speaker (Loudspeaker)

- Step 1. Insert the G-Series Pager, turned on, into the Charger Amplifier.
- Step 2. Select RCA connector and connect the external equipment.
- Step 3. When any message is received, the relay closure is asserted and audio is active.
- Step 4. Audio can be terminated by either shutting the G5 off or depressing the Reset button on the G5.

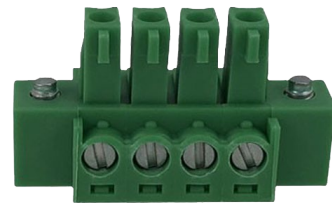
### 12-2. Fire Alert Indicator

- Step 1. Insert the G-Series Pager, turned on, into the Charger Amplifier.
- Step 2. Using the DIN Connector, connect the external equipment to the appropriate signaling pins.
  - Pins 1 and 6 are outputs and are used to control a remote speaker.
  - Pins 2 and 3 are normally open dry contacts and close when a page is received.
  - Pins 4 and 5 are not utilized on the G4/G5 Amplified Charger, all timing of the dry contacts is controlled via the Pager Programing Software.
- Step 3. Upon receiving a page, the relay and audio output are activated.

## 13 Amp Charger Connectors

### G-Series Charger Amp Terminal Connector Block

Part Number: 2811923-AMP



### G-Series Charger Amp Din Connector

Part Number: CP-1050-ND





# Unication USA

---

[www.Unication.com](http://www.Unication.com)  
[info@Unication.com](mailto:info@Unication.com)